

# DOGS AND 1080 DON'T MIX

Some dog-walking and hunting areas in eastern Wellington will be the focus of aerial 1080 possum control operations this year.

Dogs are susceptible to the 1080 toxin and contact is usually fatal. Dog deaths are rare but most involve eating poisoned carcasses. Dogs tend to roam, don't recognise boundaries and may scavenge dead animals, so avoiding operational areas and using leads and muzzles are the best ways to keep your dog safe.

## IN CASE OF POISONING

If dogs ingest 1080, symptoms may appear after 30 minutes. Dogs may appear disoriented or hyperactive, bark or howl, be sensitive to touch or aggressive.



**IF YOU SUSPECT POISONING,  
MAKE YOUR DOG VOMIT AND  
GET IT TO THE NEAREST VET  
IMMEDIATELY.**

Dogs can be saved if early action is taken, but there is no antidote to 1080. Induce vomiting with washing soda crystals or half a teaspoon of salt on the back of the tongue or emetic pills from your vet.

**Further assistance:** National Poisons Centre  
24-hour emergency service 0800 764 766.



## FREE DOG MUZZLES

You can pick up a free dog muzzle from:

**Greater Wellington Region Council**  
1056 Fergusson Drive, Upper Hutt

**DOC Wellington Visitor Centre**  
13-27 Manner Street, Wellington

**Or contact the East Harbour Regional Park Ranger**  
04 830 4444 or 027 467 3076



## BRINGING BACK THE BIRDS

Aerial pest control operations in the southern Rimutaka and East Harbour areas will help eradicate bovine TB and bring birdsong back to our forests. The TBfree operations are delivered by OSPRI and supported by the Department of Conservation, Greater Wellington Regional Council and Hutt City Council for its benefits to wildlife.

The area's native birds – kiwi, kakariki, karearea among them – are under pressure from possums, rats and stoats. These operations will knock down possums, which transmit bovine TB, and reduce rat and stoat numbers – good news for native plants and animals.



## FURTHER INFORMATION

### OSPRI

North Island office,  
Palmerston North

**P** 06 353 2710

**E** vector.SNI@ospri.co.nz  
tbfree.co.nz | ospri.co.nz

### Contractor

BioWorks  
Masterton

**P** 06 378 2484

**E** Graeme.Butcher@gw.govt.nz

**For more information on controlling bovine TB and  
why 1080 is used in New Zealand, visit [1080facts.co.nz](http://1080facts.co.nz)**



## KEEP YOUR DOG SAFE



## EAST HARBOUR AND SOUTHERN RIMUTAKA AERIAL PEST CONTROL OPERATIONS 2017



# PEST CONTROL OPERATION AREAS

The operational areas indicated by the red boundaries on this map will be treated with biodegradable 1080 poison during 2017. The East Harbour Regional Park area nearest Wellington Harbour will be treated during April 2017 and the larger Orongorongo area during May/June 2017.

Signs at access points will confirm operation dates, which are weather dependent. Please read and follow all warning signs, and note that operational areas will pose a danger for dogs until warning signs are removed.

For dog owners in the vicinity, Hutt City Council publishes guidance on looking after your dog's safety and a map of alternative exercise areas at [www.huttcity.govt.nz/dogs](http://www.huttcity.govt.nz/dogs)



Keep away from  
operational  
areas



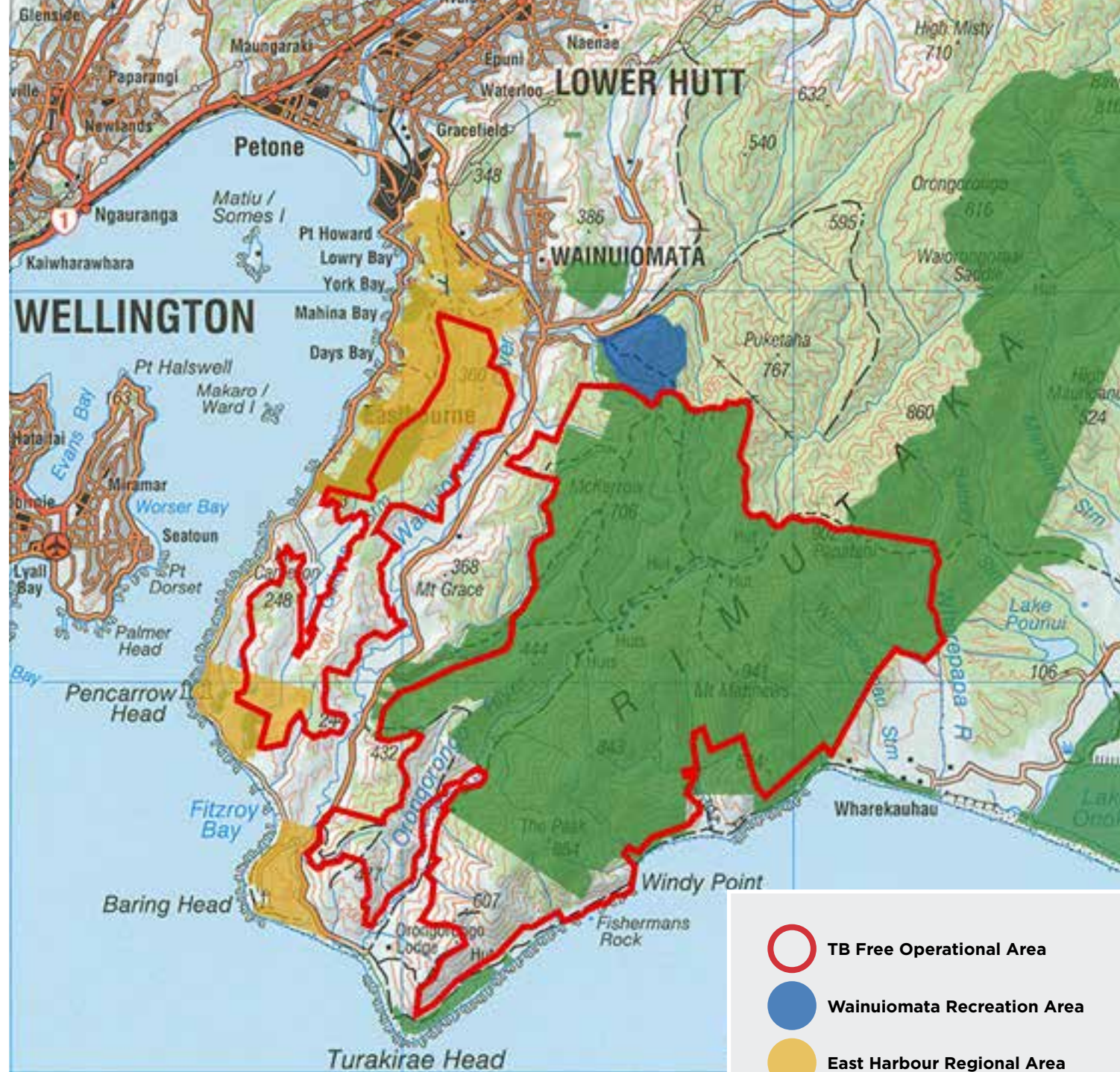
Use a lead, and  
chain or kennel  
on farms



Muzzle dogs  
if necessary



Baits are treated with a repellent to make them unpalatable to deer. The non-toxic pre-feed pellets are brownish-tan while the toxic baits are green.



-  TB Free Operational Area
-  Wainuiomata Recreation Area
-  East Harbour Regional Area
-  DOC Public Conservation Land