

# AERIAL TB CONTROL OPERATION **SOUTHERN PAPAROA 2017**

## OSPRI'S **TBfree** PROGRAMME

OSPRI's TBfree programme aims to manage and eventually eradicate bovine tuberculosis (TB) from New Zealand's farmed cattle and deer and wild animal populations. Controlling the disease prevents livestock production losses and protects the world leading reputation of New Zealand's dairy, beef and deer products. To achieve this objective, OSPRI uses possum control, along with regular herd testing and movement restrictions.

Information gathered from wild animal surveys, recent and historic findings of TB in wild animals, herd testing results and the pest control history of the region is used when planning operations.

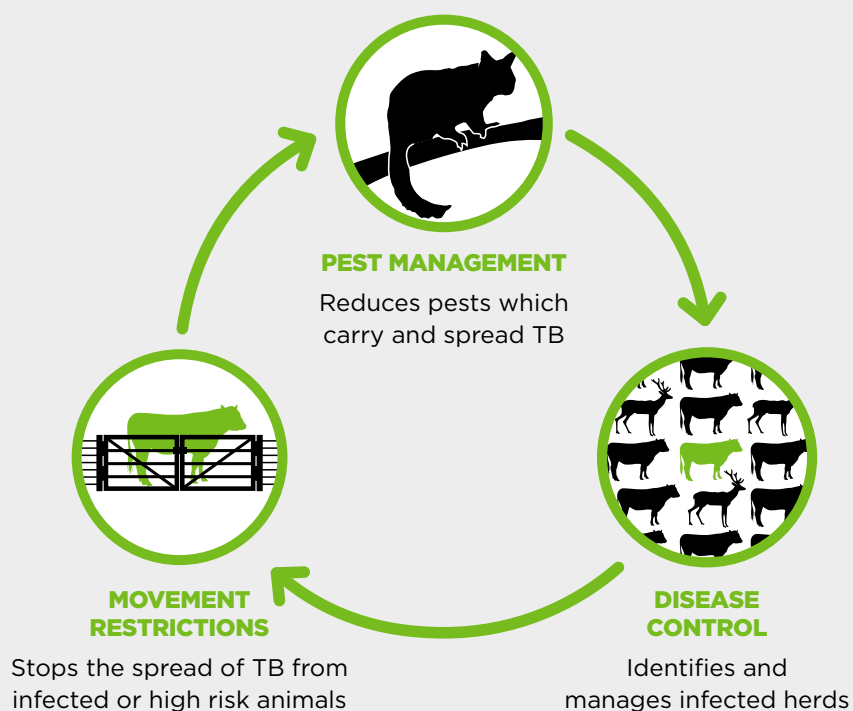


## **TARGETING POSSUMS**

We're running a possum control operation in the Southern Paparoa area (please see map). It will cover approximately 22,000 hectares.

To eradicate bovine TB, possum numbers need to be kept extremely low – around one to two animals every ten hectares.

## HOW WE CONTROL TB



Monitoring has shown that control work is needed in the Southern Paparoa area to reduce the possum population and minimise the risk of the disease spreading through wild animal populations

to farmed cattle and deer. Possum control has dramatically reduced the number of infected herds in the West Coast region. Parts of this block were last aerially treated in 2007.



## WHAT TO EXPECT FROM THE OPERATION

The operation will begin with the distribution of non-toxic, tan-coloured cereal pellets by helicopter. This “pre-feed” gives possums a taste for the pellets and overcomes bait shyness.

One to two weeks later (weather permitting), toxic, green cereal pellets – each containing 0.15% biodegradable sodium

fluoroacetate (also known as 1080) – will be applied by helicopter at a rate of two kilograms per hectare. That’s about one bait to every 60 square metres.

The Southern Paparoa operation will be subject to strict safety, quality-assurance and monitoring requirements. Advanced GPS navigational equipment will be used to ensure the pellets are accurately placed and identified exclusion zones are avoided.

## THE METHOD

The vast majority of possum control in the region is done by local contractors using ground-based traps and hand-laid toxins. The remaining, far smaller area, is controlled using aerially applied pellets containing biodegradable 1080.

Aerial control is highly-efficient, cost-effective and has been extremely successful at knocking possum numbers down to the very low levels needed to eradicate TB from wildlife and declare areas free of TB. It is preferred in areas like Southern Paparoa due to the rugged nature of the terrain.

The Parliamentary Commissioner for the Environment supports aerial control. The Commissioner completed an extensive review into the use of 1080, in which she strongly endorsed its continued use in New Zealand.

Please visit [pce.parliament.nz](https://pce.parliament.nz) to read this report.



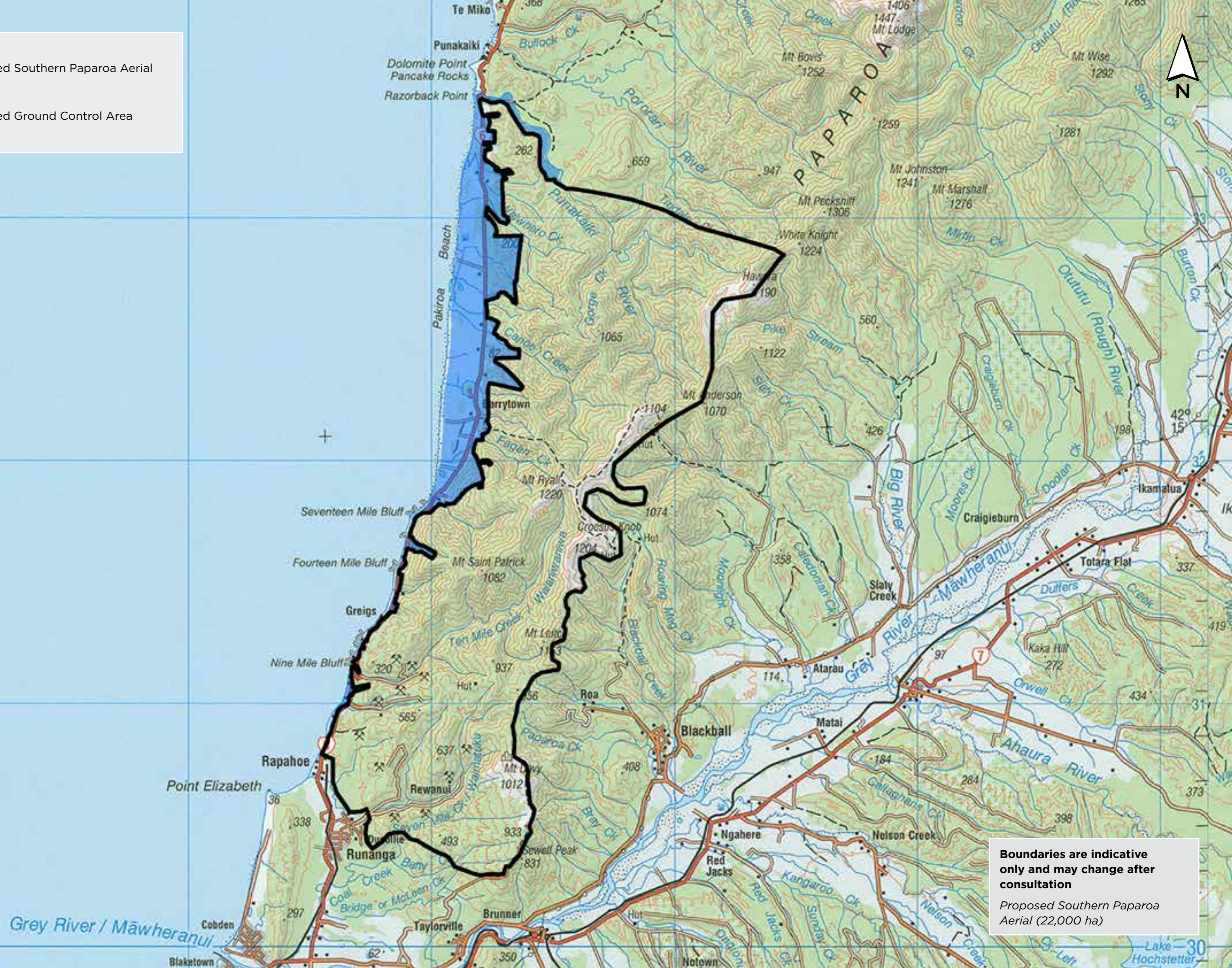
Toxic baits



Pre-feed pellets

Proposed Southern Paparoa Aerial

Proposed Ground Control Area



**Boundaries are indicative only and may change after consultation**

*Proposed Southern Paparoa Aerial (22,000 ha)*

## WHAT HAPPENS NOW

The Southern Paparoa operation is planned for 1 May 2017 onwards. A contractor will be doing the work on behalf of OSPRI's TBfree programme. Before the operation, all landowners and occupiers within and adjacent to the proposed control area will be contacted and visited by a contractor representative. They will discuss boundary issues, water supply safety and the management of any risks to dogs and livestock. Consents from the West Coast Regional Council, Department of Conservation and the Ministry of Health are required for this operation. Affected landowners and occupiers will be contacted again before the

operation starts, notices will be published in local newspapers and warning signs will be placed at all likely access points to the operational area.

## BIODIVERSITY BENEFITS

The operation will have additional conservation benefits for native birds and bush. Possums eat the forest canopy and prey on native birdlife, including eggs and chicks. Biodegradable 1080 is also extremely effective at controlling other introduced predators such as ship rats and stoats. Species such as roroa (great spotted kiwi) and rata will benefit from reduced predator numbers, and it is hoped they will establish secure sustainable populations in the project area.



# IMPORTANT INFORMATION

**Warning signs will be placed at all main access points to the operational area and everyone must follow the cautions on the signs. There's no health risk when using this area as long as you follow these instructions:**

**Do not** handle any bait or allow children to wander unsupervised. Cereal baits containing 1080 are dyed green.

**Do not** hunt or take game from within a two kilometre radius of the operational area for human or pet consumption. It's an offence to sell meat products

that have been exposed to 1080. Hunting can resume approximately four months following the control work.

Please observe these rules whenever you see warning signs about the pesticide. Warning signs indicate that pesticide residues may still be present in baits or animals. When the signs are officially removed, you can resume normal activities in the area. Free dog muzzles will be provided on request. Please contact OSPRI's Greymouth office on 03 769 9098 to obtain a muzzle.



**Do not bring dogs into the area until the warning signs have been officially removed.** Dogs are particularly susceptible to 1080. They must not be allowed access to bait or poisoned carcasses which remain toxic to dogs until they have fully decomposed. If you have concerns about your dog, please contact the contractor.



## WHAT TO DO IF YOU SUSPECT POISONING

Contact your local hospital or doctor, or dial 111

National Poisons Centre  
0800 POISON (764 766)

If a domestic animal is poisoned, contact a local veterinarian.



## FURTHER INFORMATION

### OSPRI

388 Main South Road  
Paroa  
Greymouth

**P** 03 769 9098

**E** [vectornsi@ospri.co.nz](mailto:vectornsi@ospri.co.nz)  
[tbfree.co.nz](http://tbfree.co.nz) | [ospri.co.nz](http://ospri.co.nz)

### Contractor

Vector Control Services  
Aerial Coordinator

**P** 03 768 9674

**E** [vcs@xtra.co.nz](mailto:vcs@xtra.co.nz)  
[vcs.net.nz](http://vcs.net.nz)

**For more information on controlling bovine TB and why 1080 is used in New Zealand, visit [1080facts.co.nz](http://1080facts.co.nz)**



## THERE IS NO RISK TO PUBLIC DRINKING WATER

Biodegradable 1080 is highly soluble and does not persist in water or soil. Local health authorities apply strict conditions to aerial operations so that drinking water supplies are not contaminated. Safety has been confirmed by tests on several thousand water samples taken after aerial 1080 operations over many years.