

MOLESWORTH BOVINE TB CONTROL OPERATION (YEAR 1)

OSPRI'S **TBfree** PROGRAMME

The TBfree programme aims to control and eventually eradicate bovine tuberculosis (TB) from New Zealand's farmed cattle and deer and wild animal populations by 2055. Controlling disease prevents livestock production losses and protects the world leading reputation of New Zealand's dairy, beef and deer products. We use possum control, along with regular herd testing and movement restrictions, to achieve our eradication goals. Information gathered from wild animal surveys, recent and historic findings of TB in wild animals, herd testing results and the operational history of the region is used when planning operations.

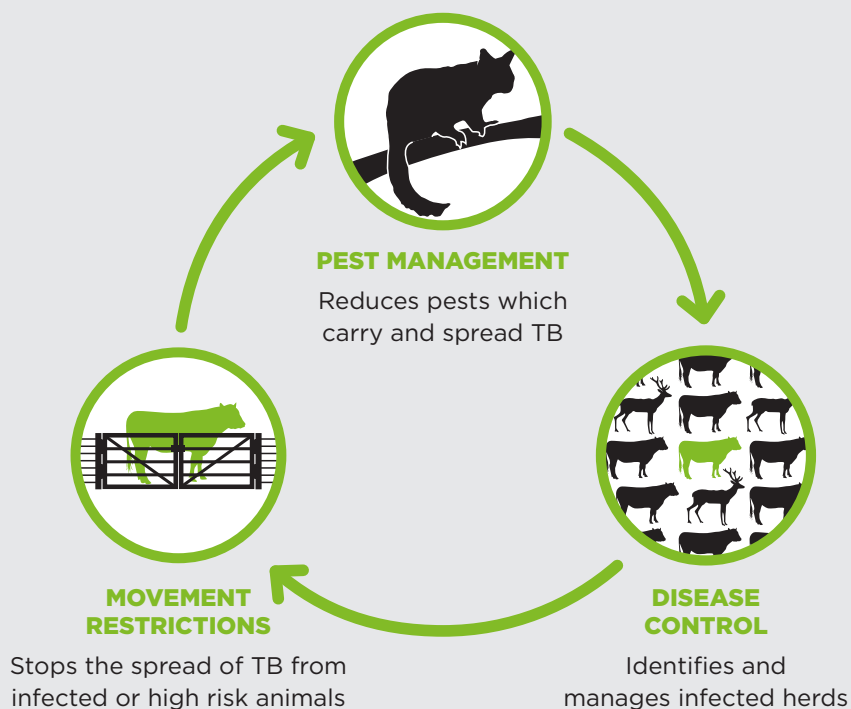


TARGETING POSSUMS

We're running a possum control operation in the Molesworth area (please refer to the map). The operational area will cover approximately 60,000 hectares.

The Molesworth (year 1) aerial operation forms part of a broad scale possum control and wildlife surveillance programme, beginning in spring 2017. It is the first of three aerial operations planned to be

HOW WE CONTROL TB



delivered in the Molesworth area over the next 3 years.

To eradicate bovine TB, possum numbers need to be kept extremely low – around one to two animals every 10 hectares. Wildlife surveys undertaken in the Molesworth area have found TB infection, with the most recent cases being ferrets in

2017 and pigs in 2016. The planned possum control operation will reduce the possum population and minimise the risk of the disease spreading through wild animal populations and onto farmed cattle and deer.

More information on the plan to eradicate bovine TB from Molesworth Station can be found [here](#).



WHAT TO EXPECT

The operation will begin with the distribution of non-toxic, tan-coloured cereal pellets by helicopter. This “pre-feed” gives possums a taste for the pellets and overcomes bait shyness. One to two weeks later, toxic, green cereal pellets – each containing 0.15 percent biodegradable sodium fluoroacetate (also known as 1080) – will be applied by helicopter at a rate of two kilograms per hectare. That’s about one bait to every 60 square metres.

Deer repellent will be used over 2,000 hectares. The area where deer repellent will be applied is shown on the operational map.

The Molesworth (year 1) operation will be subject to strict safety, quality-assurance and monitoring requirements. Advanced GPS navigational equipment will be used to ensure the pellets are accurately placed and exclusion zones avoided.

THE METHOD

The vast majority of possum control in the region is done by local contractors

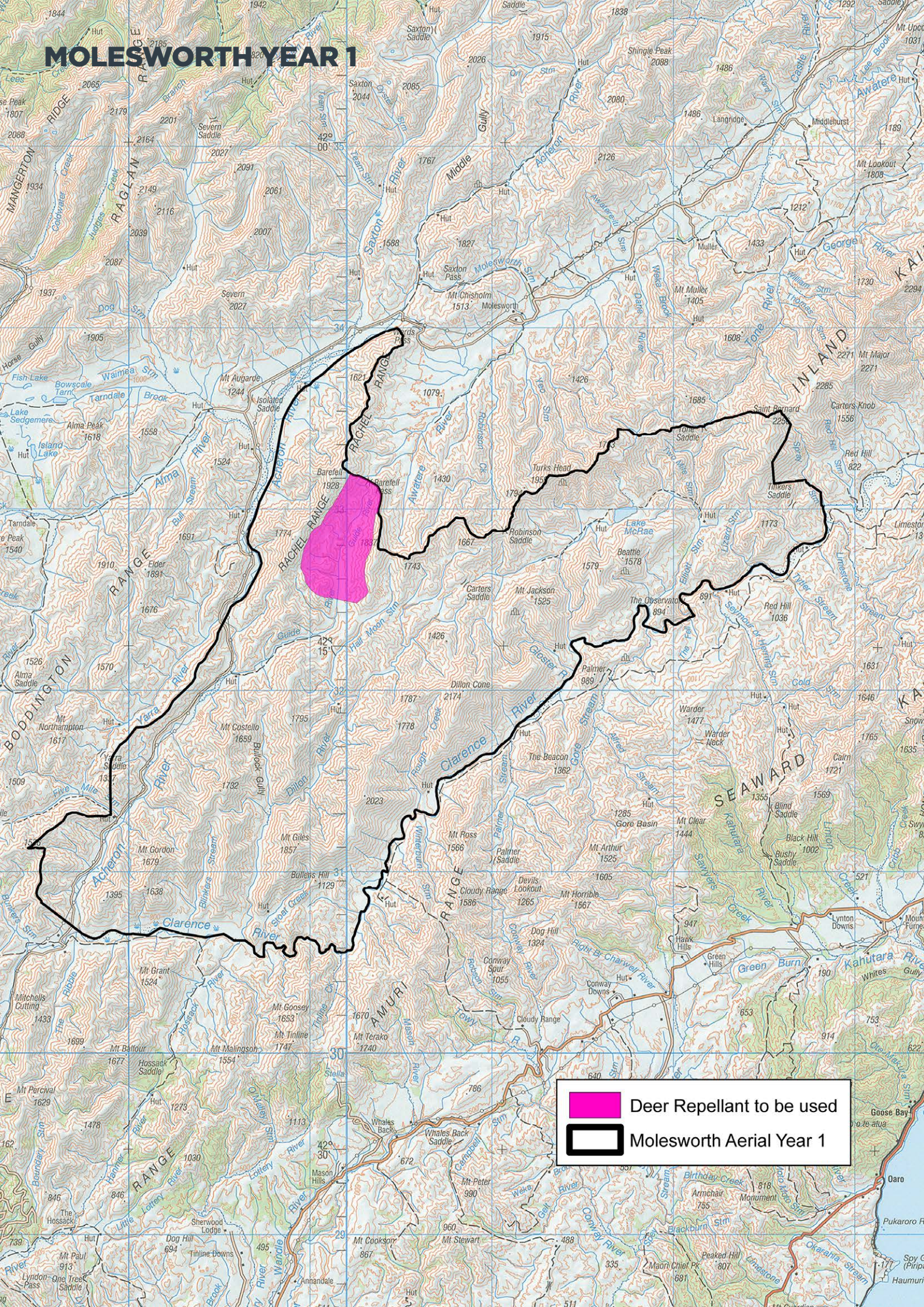
using ground-based traps and hand-laid toxins. The remaining, far smaller area is controlled using aerially applied pellets containing biodegradable 1080. Aerial control is efficient, cost effective and has been extremely successful at knocking possum numbers down to very low levels in the past. The Parliamentary Commissioner for the Environment also supports aerial control. The commissioner completed an extensive review into the use of 1080, in which she strongly endorsed its continued use in New Zealand.


Please visit pce.parliament.nz to read this report.




Top: 1080 bait. Bottom: Baits covered in deer repellent. The non-toxic pre-feed pellets are brownish-tan while the toxic baits are green.

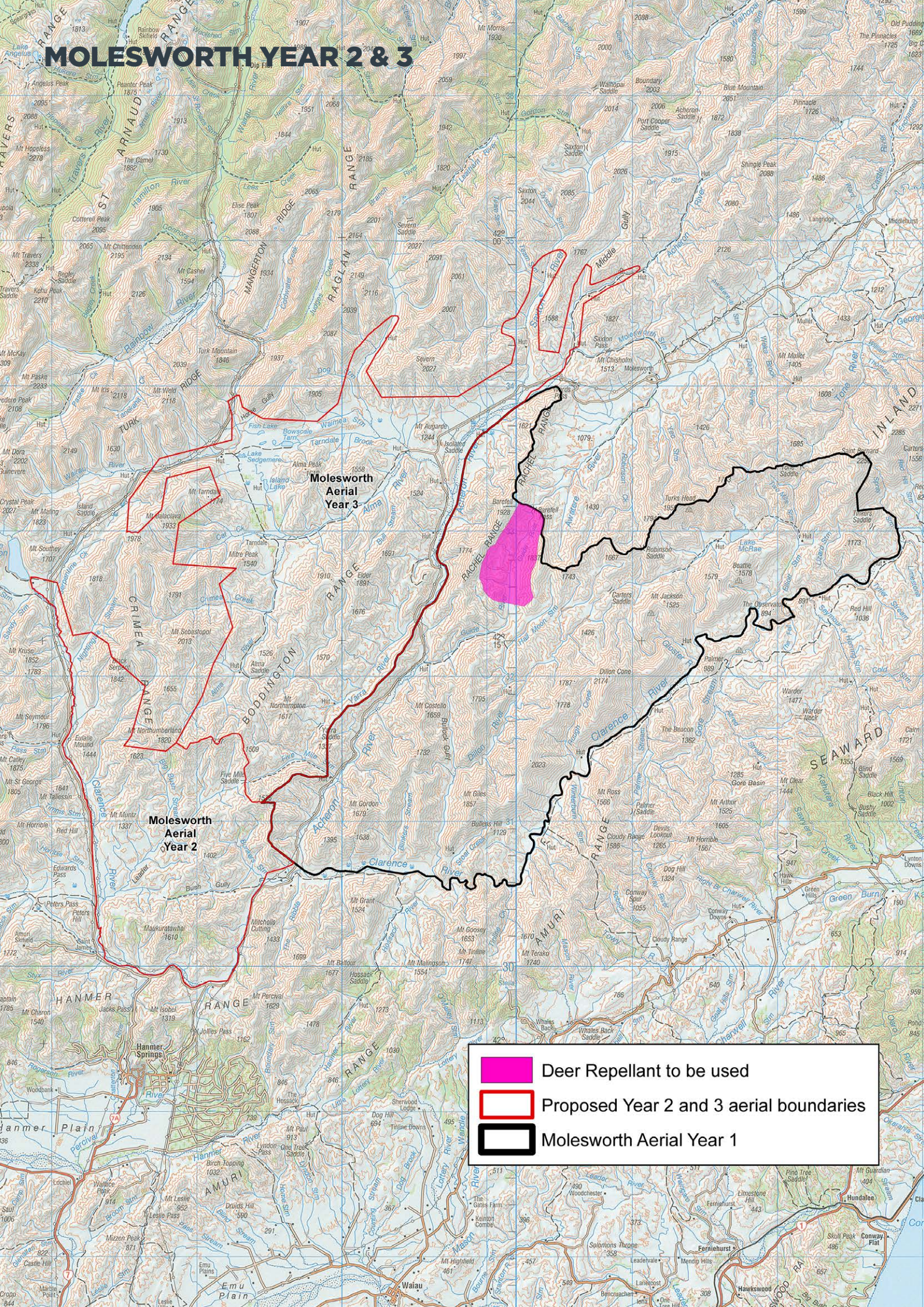
MOLESWORTH YEAR 1



**Deer Repellent to be used**

**Molesworth Aerial Year 1**

MOLESWORTH YEAR 2 & 3



WHAT HAPPENS NOW

This operation will commence from late September 2017 onwards, weather dependent. A contractor will be doing the work on behalf of OSPRI's TBfree programme. Before the operation, affected landowners and occupiers will be contacted and visited by one of our contractors. They will discuss boundary issues, water supply safety and the management of any risks to dogs and livestock. Consents from the Department of Conservation and the Ministry of Health are required for this operation. Affected landowners and occupiers will be contacted again before the operation starts, notices will be published in local newspapers and warning signs will be placed at all likely access points to the operational area.

BIODIVERSITY BENEFITS

The operation will have additional conservation benefits for native birds and bush. Possums eat the forest canopy and prey on native birdlife, including eggs and chicks. Biodegradable 1080 is also extremely effective at controlling other introduced predators such as ship rats and stoats.



© Rosa Cabecinhas



© Herb Christophers



IMPORTANT INFORMATION

Warning signs will be placed at all main access points to the operational area and everyone must follow the cautions on the signs. There's no health risk when using this area as long as you follow these instructions:

Do not handle any bait or allow children to wander unsupervised. Cereal baits containing 1080 are dyed green.

Do not hunt or take game from within a two kilometre radius of the operational area for human or

pet consumption. It's an offence to sell meat products that have been exposed to 1080. Hunting can resume approximately four months following the control work, or two months if 100mm of rain has fallen.

Please observe these rules whenever you see warning signs about the pesticide. Warning signs indicate that pesticide residues may still be present in baits or animals. When the signs are officially removed, you can resume normal activities in the area.



Do not bring dogs into the area until the warning signs have been officially removed.

Dogs are particularly susceptible to 1080. They must not be allowed access to bait or poisoned carcasses which remain toxic to dogs until they have fully decomposed.



THERE IS NO RISK TO PUBLIC DRINKING WATER

Biodegradable 1080 is highly soluble and does not persist in water or soil. Local health authorities apply strict conditions to aerial operations so that drinking water supplies are not contaminated. Safety has been confirmed by tests on several thousand water samples taken after aerial 1080 operations over many years.



WHAT TO DO IF YOU SUSPECT POISONING

Contact your local hospital or doctor, or **dial 111**

National Poisons Centre
0800 POISON (764 766)

If a domestic animal is poisoned, contact a local veterinarian.



FURTHER INFORMATION

OSPRI

388 Main South Road

Paroa, Greymouth

P 03 769 9098

E vectorsi@tbfree.org.nz
ospri.co.nz

Contractor

Vector Free Marlborough Limited, Blenheim

P 0508 548 008

E communications@vectorfree.co.nz
co.nz

For more information on controlling bovine TB and why 1080 is used in New Zealand, visit 1080facts.co.nz