

AERIAL TB CONTROL OPERATION ISOLATED HILL 2016

OSPRI'S **TBfree** PROGRAMME

OSPRI's TBfree programme aims to manage and eventually eradicate bovine tuberculosis (TB) from New Zealand's farmed cattle and deer and wild animal populations. Controlling the disease prevents livestock production losses and protects the world leading reputation of New Zealand's dairy, beef and deer products. To achieve this objective, OSPRI uses possum control, along with regular herd testing and movement restrictions.

Information gathered from wild animal surveys, recent and historic findings of TB in wild animals, herd testing results and the pest control history of the region is used when planning operations.

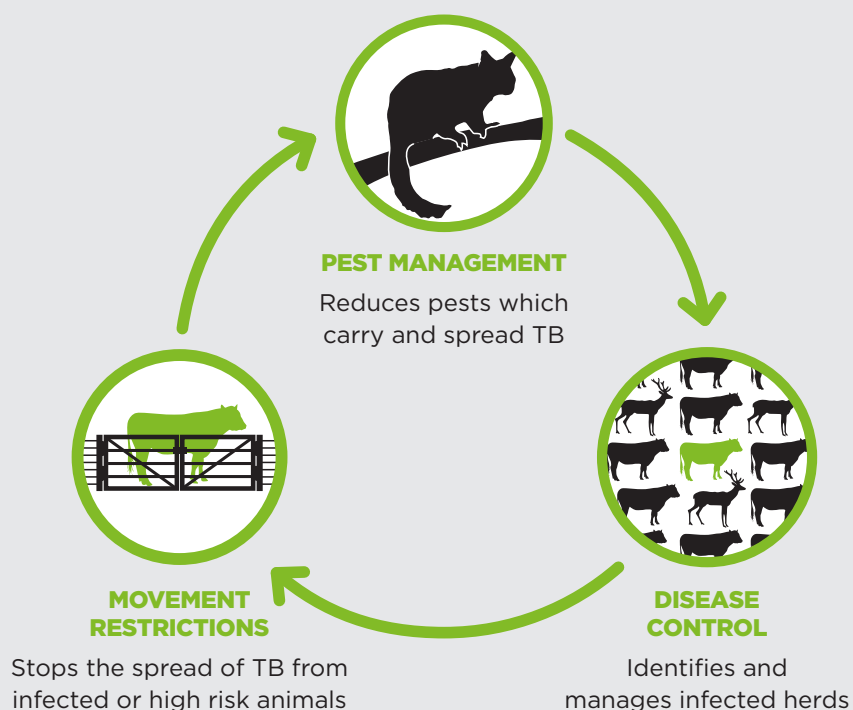


TARGETING POSSUMS

We're running a possum control operation in the Isolated Hill area (please see map). It will cover approximately 3,630 hectares.

To eradicate bovine TB, possum numbers need to be kept extremely low – around one to two animals every ten hectares.

HOW WE CONTROL TB



Recent monitoring has shown that further control work is needed in the Isolated Hill area to reduce the possum population and minimise the risk of the disease spreading through wild animal populations to farmed cattle and deer.

Possum control has dramatically reduced the number of infected herds in the North Canterbury-Marlborough region. This area was last treated in 2009 by the Department of Conservation.



WHAT TO EXPECT FROM THE OPERATION

The operation will begin with the distribution of non-toxic, tan-coloured cereal pellets by helicopter. This “pre-feed” gives possums a taste for the pellets and overcomes bait shyness.

One to two weeks later (weather permitting), toxic, green cereal pellets – each containing 0.15% biodegradable sodium

fluoroacetate (also known as 1080) – will be applied by helicopter at a rate of two kilograms per hectare. That’s about one bait to every 60 square metres.

The Isolated Hill operation will be subject to strict safety, quality-assurance and monitoring requirements. Advanced GPS navigational equipment will be used to ensure the pellets are accurately placed and identified exclusion zones are avoided.

THE METHOD

The vast majority of possum control in the region is done by local contractors using ground-based traps and hand-laid toxins. The remaining, far smaller area, is controlled using aerially applied pellets containing biodegradable 1080.

Aerial control is highly-efficient, cost-effective and has been extremely successful at knocking possum numbers down to the very low levels needed to eradicate TB from wildlife and declare areas free of TB. It is preferred in areas like Isolated Hill due to the rugged nature of the terrain.

The Parliamentary Commissioner for the Environment supports aerial control. The Commissioner completed an extensive review into the use of 1080, in which she strongly endorsed its continued use in New Zealand.

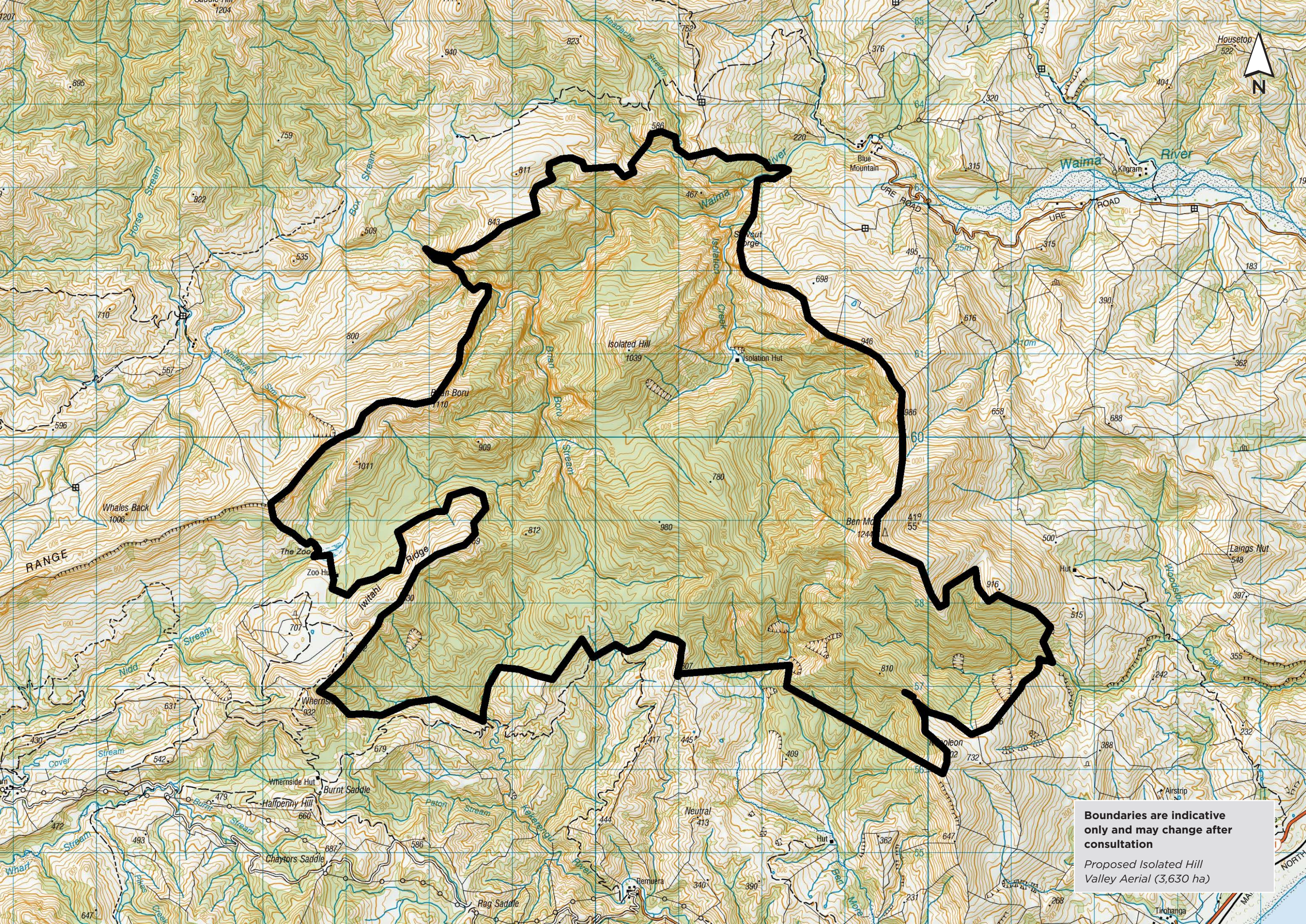
Please visit pce.parliament.nz to read this report.



Toxic baits



Pre-feed pellets



Boundaries are indicative only and may change after consultation

Proposed Isolated Hill Valley Aerial (3,630 ha)

WHAT HAPPENS NOW

The Isolated Hill operation is planned to begin in May 2016. A contractor will be doing the work on behalf of OSPRI's TBfree programme. Before the operation, all landowners and occupiers within and adjacent to the proposed control area will be contacted and visited by our contractors. They will discuss boundary issues, water supply safety and the management of any risks to dogs and livestock. Consents from Marlborough District Council, Environment Canterbury, Department of Conservation and Ministry of Health are required for this operation. Affected landowners and occupiers will be contacted again before the operation starts, notices will be published in local newspapers and warning signs will be placed at all likely access points to the operational area.

BIODIVERSITY BENEFITS

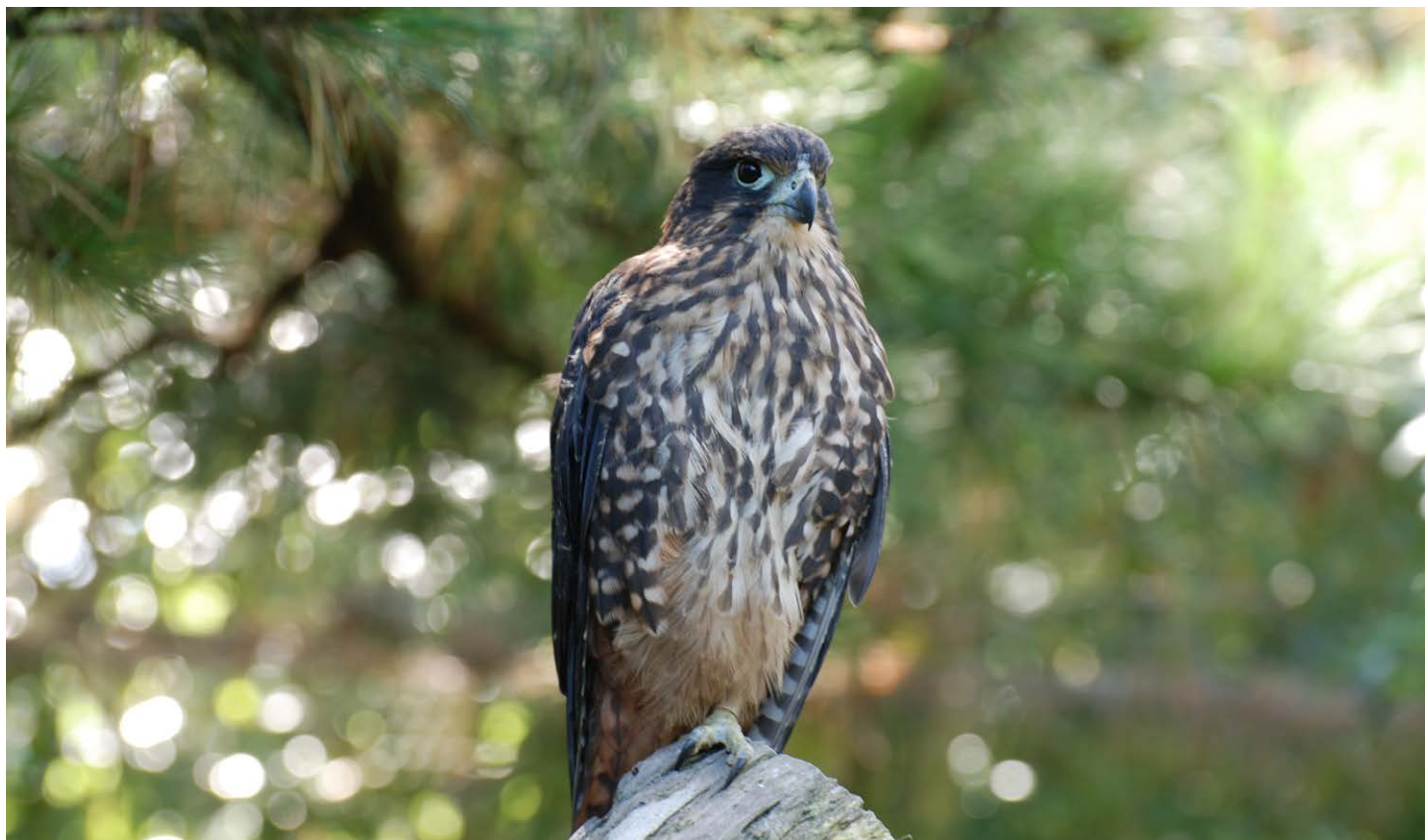
The Isolated Hill area is nationally important as it is one of the largest tracts of lowland forest in the eastern South Island. In addition, the limestone landforms provide habitat for many nationally rare plants, some of which – for example, Astons Dwarf Broom and Chalk Range Cress – are found only in South Marlborough, with Isolated Hill being their stronghold. Over 500 species of plants have been recorded in the area – nearly a quarter of our total native vascular flora. Forty eight of these are nationally 'threatened' or 'at risk'. Possums eat these plants, threatening these unique communities and species.

A range of bird species live within the area including kārearea (New Zealand falcon), kākāriki, South Island robin, bellbird, fantail, tui, kererū, tomtit, rifleman and



brown creeper. Possums are a major predator to our native birds, preying on eggs and chicks.

Native snails (Wainuia and Rhytida) and several lizard species such as the scree skink, forest gecko, rough gecko and long toed skink live within the reserve. They rely on the health of the forest for survival and are preyed upon by ship rats and stoats. Biodegradable 1080 is very effective at controlling these predators as well as possums.



IMPORTANT INFORMATION

Warning signs will be placed at all main access points to the operational area and everyone must follow the cautions on the signs. There's no health risk when using this area as long as you follow these instructions:

Do not handle any bait or allow children to wander unsupervised. Cereal baits containing 1080 are dyed green.

Do not hunt or take game from within a two kilometre radius of the operational area for human or pet consumption. It's an offence to sell meat products

that have been exposed to 1080. Hunting can resume approximately four months following the control work.

Please observe these rules whenever you see warning signs about the pesticide. Warning signs indicate that pesticide residues may still be present in baits or animals. When the signs are officially removed, you can resume normal activities in the area. Free dog muzzles will be provided on request. Please contact OSPRI's Greymouth office on 03 769 9098 to obtain a muzzle.



Do not bring dogs into the area until the warning signs have been officially removed. Dogs are particularly susceptible to 1080. They must not be allowed access to bait or poisoned carcasses which remain toxic to dogs until they have fully decomposed. If you have concerns about your dog, please contact the contractor.



WHAT TO DO IF YOU SUSPECT POISONING

Contact your local hospital or doctor, or dial 111

National Poisons Centre
0800 POISON (764 766)

If a domestic animal is poisoned, contact a local veterinarian.



FURTHER INFORMATION

OSPRI

388 Main South Road
Paroa

Greymouth

P 03 769 9098

E vectorsi@ospri.co.nz
tbfree.co.nz | ospri.co.nz

Contractor

Vector Free Marlborough
Barry Polson

P 021 502 811

E vectorfreebarry@xtra.co.nz

For more information on controlling bovine TB and why 1080 is used in New Zealand, visit 1080facts.co.nz



THERE IS NO RISK TO PUBLIC DRINKING WATER

Biodegradable 1080 is highly soluble and does not persist in water or soil. Local health authorities apply strict conditions to aerial operations so that drinking water supplies are not contaminated. Safety has been confirmed by tests on several thousand water samples taken after aerial 1080 operations over many years.