

AERIAL TB CONTROL OPERATION HAUHUNGAROA 2016

OSPRI'S **TBfree** PROGRAMME

OSPRI's TBfree programme aims to manage and eventually eradicate bovine tuberculosis (TB) from New Zealand's farmed cattle and deer and wild animal populations. Controlling the disease prevents livestock production losses and protects the world leading reputation of New Zealand's dairy, beef and deer products. To achieve this objective, OSPRI uses possum control, along with regular herd testing and movement restrictions.

Information gathered from wild animal surveys, recent and historic findings of TB in wild animals, herd testing results and the pest control history of the region is used when planning operations.

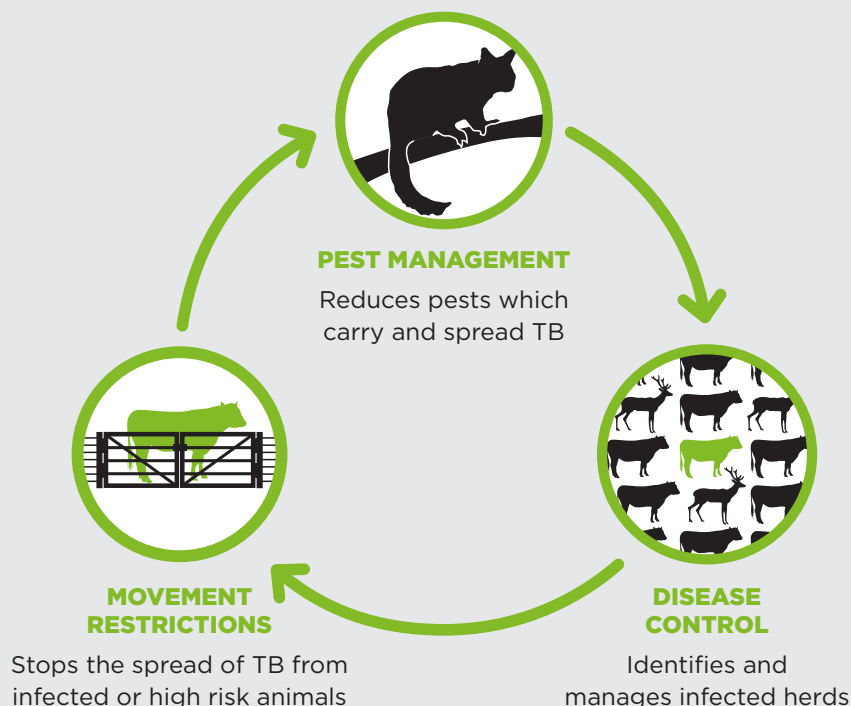


TARGETING POSSUMS

We're running an aerial operation in the Hauhungaroa area (please see map) that will cover 80,000 hectares. This could be the last time the area is treated if no TB is found following the operation.

To eradicate bovine TB, possum numbers need to be kept extremely low – around one to two animals every ten hectares. Recent monitoring has

HOW WE CONTROL TB



shown that control work is needed in the Hauhungaroa area to reduce the possum population and minimise the risk of the disease spreading through wild animal populations to farmed cattle and deer. Possum control has dramatically reduced the number of infected herds in the Waikato and Horizons regions.

This area was last treated in 2011, with parts of it retreated in 2013, due to remaining high pest numbers.

WHAT TO EXPECT

The operation will begin with the distribution of non-toxic, tan-coloured cereal pellets by helicopter. Two separate



“pre-feeds”, one to two weeks apart, will give possums a taste for the pellets and overcomes bait shyness.

One to two weeks later (weather permitting), toxic, green cereal pellets – each containing 0.15% biodegradable sodium fluoroacetate (also known as 1080) – will be applied by helicopter at a rate of 1.5 to 2 kilograms per hectare. That’s about one bait to every 60 square metres. Some areas will receive bait coated in deer repellent.

The Hauhungaroa operation will be subject to strict safety, quality-assurance and monitoring requirements. Advanced GPS navigational equipment will be used to ensure the pellets are accurately placed and identified exclusion zones are avoided.

THE METHOD

The vast majority of possum control in the region is done by local contractors using ground-based traps and hand-laid toxins. The remaining,



far smaller area, is controlled using aerially applied pellets containing biodegradable 1080.

Aerial control is highly-efficient, cost-effective and has been extremely successful at knocking possum numbers down to the very low levels needed to eradicate TB from wildlife and declare areas free of TB. It is preferred in areas like Hauhungaroa due to the rugged nature of the terrain.

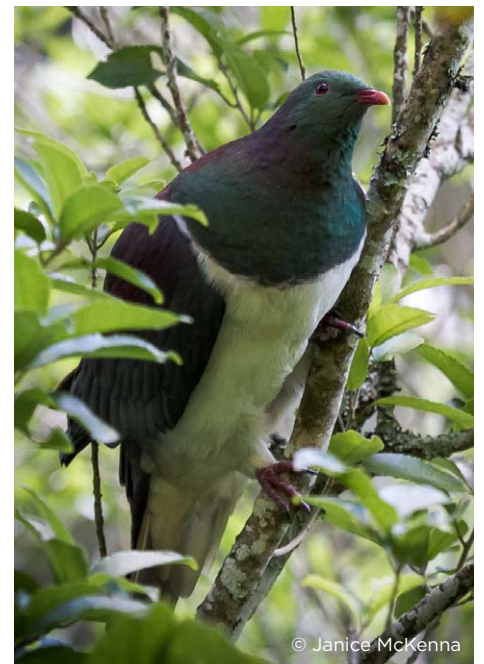
The Parliamentary Commissioner for the Environment supports aerial control. The Commissioner completed an extensive review into the use of 1080, in which she strongly endorsed its continued use in New Zealand.

Please visit pce.parliament.nz to read this report.

WHAT HAPPENS NOW

The Hauhungaroa operation is scheduled to begin in late April 2016 and extending to July 2016, weather permitting. A contractor will be doing the work on behalf of OSPRI’s TBfree programme. Before the operation, all landowners and occupiers within and adjacent to the proposed control area will be contacted and visited by our contractors. They will discuss boundary issues, water supply safety and the management of any risks to dogs and livestock. Consents from the Department of Conservation, Ministry of Health and both the Waikato and

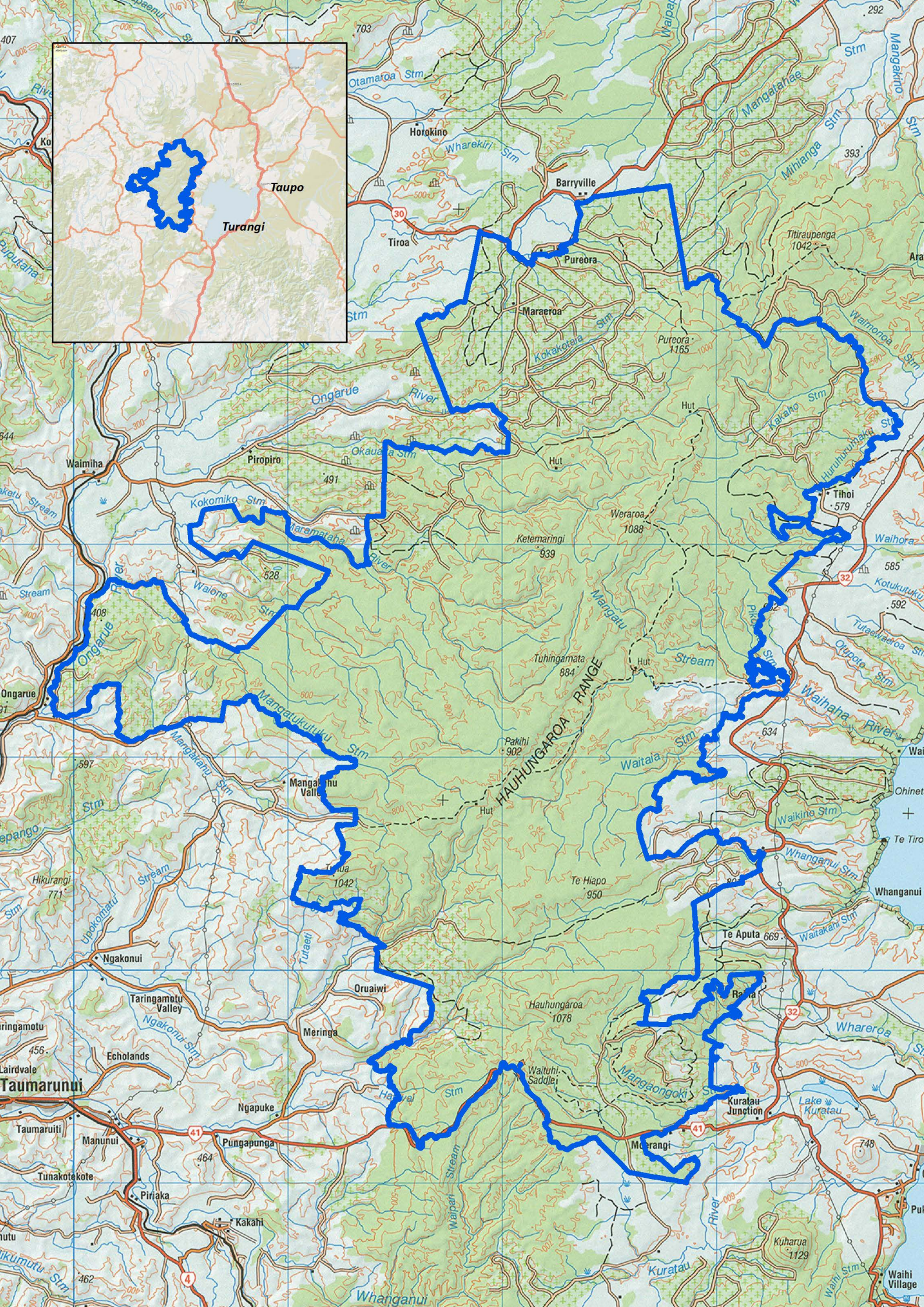
Horizons regional councils are required for this operation. Affected landowners and occupiers will be contacted again before the operation starts, notices will be published in local newspapers and warning signs will be placed at all likely access points to the operational area.



© Janice McKenna

BIODIVERSITY BENEFITS

The operation will have additional conservation benefits for native birds and bush. Possums eat the forest canopy and prey on native birdlife, including eggs and chicks. Biodegradable 1080 is also extremely effective at controlling other introduced predators which destroy our native species, such as ship rats and stoats.



IMPORTANT INFORMATION

Warning signs will be placed at all main access points to the operational area and everyone must follow the cautions on the signs. There's no health risk when using this area as long as you follow these instructions:

Do not handle any bait or allow children to wander unsupervised. Cereal baits containing 1080 are dyed green.

Do not hunt or take game from within a two kilometre radius of the operational area for human or pet consumption. It's an offence

to sell meat products that have been exposed to 1080. Hunting can resume approximately four months following the control work.

Please observe these rules whenever you see warning signs about the pesticide. Warning signs indicate that pesticide residues may still be present in baits or animals. When the signs are officially removed, you can resume normal activities in the area. Free dog muzzles will be provided on request. Please contact Epro on 07 378 4852 to obtain a muzzle.



Do not bring dogs into the area until the warning signs have been officially removed.

Dogs are particularly susceptible to 1080. They must not be allowed access to bait or poisoned carcasses which remain toxic to dogs until they have fully decomposed.



WHAT TO DO IF YOU SUSPECT POISONING

Contact your local hospital or doctor, or **dial 111**

National Poisons Centre
0800 POISON (764 766)

If a domestic animal is poisoned, contact a local veterinarian.



FURTHER INFORMATION

**OSPRI Northern
North Island office**

PO Box 10 522

Te Rapa, Hamilton 3241

P 07 849 8913

E NNIadmin@ospri.co.nz
tbfree.co.nz | ospri.co.nz

Contractor

Epro Limited

Aerial Co-ordinator

P 07 378 4852

E control@epro.co.nz

**For more information
on controlling bovine
TB and why 1080 is
used in New Zealand,
visit 1080facts.co.nz**

THERE IS NO RISK TO PUBLIC DRINKING WATER

Biodegradable 1080 is highly soluble and does not persist in water or soil. Local health authorities apply strict conditions to aerial operations so that drinking water supplies are not contaminated. Safety has been confirmed by tests on several thousand water samples taken after aerial 1080 operations over many years.

