

# GOOD NEWS! WE'RE REDUCING TB TESTING REQUIREMENTS FOR NEARLY 7000 HERDS

Farmers can enjoy the benefit of less TB testing as OSPRI's TBfree programme reduces the disease control areas.

The farming industry's investment in TB eradication is paying off again as this year's disease control area changes affect 2.3 million hectares, around 7400 herds and result in 289,000 less TB tests. The reductions are effective from 1 March.

If you're in a region where special testing requirements have been changed you'll benefit from significantly fewer TB tests.

OSPRI's TBfree programme divides the country into a number of disease control areas. Each has different TB testing requirements and control measures depending on the risk of TB being transferred from infected wildlife (mainly possums) to cattle and deer. Intense TB testing, movement control and both ground and aerial pest control are used to stop the spread of TB. As our work proves successful in each area, disease control areas are reviewed and testing requirements relaxed.

Extensive coordinated possum control over many years in the southern

and eastern North Island has seen a dramatic drop in the number of TB-infected herds with only two infected herds at the end of 2016 – down from 28 in 2006.

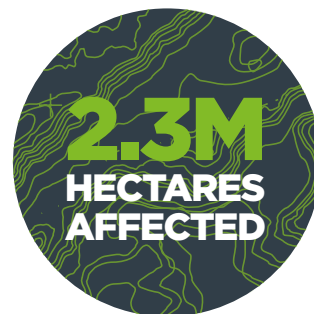
Over the past five years, OSPRI's TBfree programme has eradicated TB from possums over 1.6 million hectares at the end of 2016 and infected herds were down to 43 – a huge decrease from nearly 1700 in 1994.

A new plan for tackling TB was launched in 2016. Under the new TB plan, our goals are to eradicate TB from New Zealand, with TB freedom from cattle and deer herds by 2026, TB freedom from possums by 2040, and biological eradication by 2055. In order to achieve that, changes to the TB testing and pest control approach will be phased in.



Visit [tbfree.co.nz/dcamap](http://tbfree.co.nz/dcamap) to check which disease control area you're in.

*New areas will be available on 1 March.*





Neil Smith

## TESTING EASES FOR WAIRARAPA FARMERS

Neil Smith farms just east of Masterton in the heart of the Wairarapa. At Katatane, he runs a 500-hectare sheep and beef finishing property with a happy herd of Angus cattle.

"We like to keep them calm, well fed and watered – they do much better like that. For them, testing moving to biennial means one less stressful muster into the yards," Neil says. "The yards are up in the front corner or the farm, so there's a couple of

days' work bringing mobs forward and putting them through the testing."

The herd at Katatane and the 17,000 hectares around it will move from annual to biennial testing for all stock over 24 months of age. The change will affect 292 herds, predominantly beef cattle, with nine dairy and eight deer herds. That means a reduction of 4675 TB tests.

Neil has been in the region most of his working life, having grown up in Carterton. The farm has been in the Deans family for four or five generations, originally part of Brancepeth, a huge farming entity of 24,000 hectares that, at its peak in 1900, employed 300 staff.

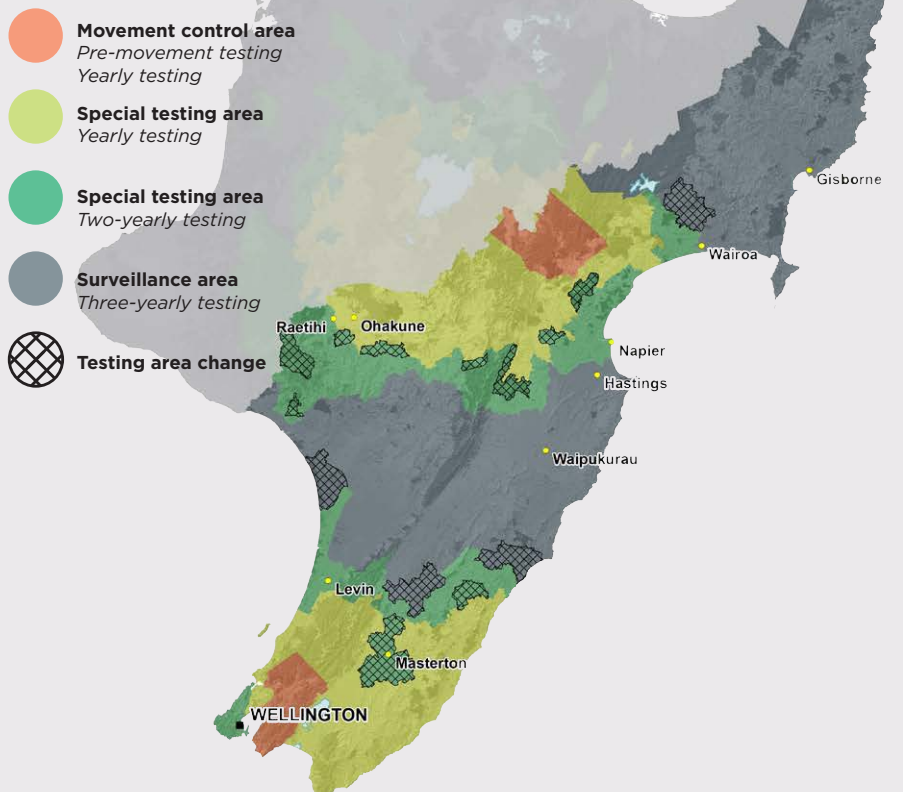
Neil works Katatane with the boss, when his lime quarry business allows, plus casual workers when he needs them.

"Growing up in the Wairarapa, we were in a movement control area (MCA) most of our farming lives, so we've gone through pre-movement testing to annual testing to the next stage that we're coming into now.

"People of my generation have grown up with TB, with testing as a normal part of farming. Now we're able to reduce testing in all but a few areas, and the message for farmers still going through movement restrictions and testing is that we've got to keep doing what we do. It's for the betterment of the economy and for our export markets, and we're trying to eradicate a disease. The further we get along the chain, the more positive it is for the New Zealand farming industry.

## DISEASE CONTROL AREA CHANGES IN THE SOUTHERN AND EASTERN NORTH ISLAND

Areas valid from 1 March 2017



**1000**  
HERDS WITH  
LESS TESTING

**31,500**  
LESS  
TB TESTS

**188,000**  
HECTARES  
AFFECTED



### FURTHER INFORMATION

For more information visit  
[tbfree.co.nz](http://tbfree.co.nz).

If you have questions or  
need a hand call OSPRI on

**0800 482 463**

OSPRI manages the NAIT  
and TBfree programmes  
and can help you meet your  
responsibilities for each.