

GOOD NEWS! WE'RE REDUCING TB TESTING REQUIREMENTS FOR OVER 7000 HERDS

Farmers can enjoy the benefit of less TB testing as OSPRI's TBfree programme reduces the disease control areas.

The farming industry's investment in TB eradication is paying off again as this year's disease control area changes affect 2.3 million hectares, around 7400 herds and result in 289,000 less TB tests. The reductions are effective from 1 March.

If you're in the Mount Cargill region movement control restrictions will now apply and you will be required to complete pre-movement tests before moving stock.

If you're in a region where special testing requirements have been changed you'll benefit from significantly fewer TB tests.

OSPRI's TBfree programme divides the country into a number of disease control areas. Each has different TB testing requirements and control measures depending on the risk of TB being transferred from infected wildlife (mainly possums) to cattle and deer. Intense TB testing, movement control and both ground and aerial pest control are used to stop the spread of TB. As our work proves successful in each area, disease control areas are reviewed and testing requirements reduced.

Extensive coordinated possum control over many years in South Canterbury, Otago and Southland has seen a dramatic drop in the number of TB-infected herds in the southern South Island with only 13 infected herds at the end of 2016 – down from 40 in 2006.

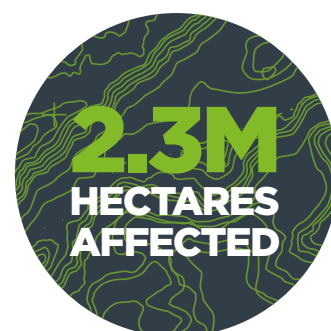
Over the past five years, OSPRI's TBfree programme has eradicated TB from possums over 1.6 million hectares at the end of 2016 and infected herds were down to 43 – a huge decrease from nearly 1700 in 1994.

A new plan for tackling TB was launched in 2016. Under the new TB plan, our goals are to eradicate TB from New Zealand, with TB freedom from cattle and deer herds by 2026, TB freedom from possums by 2040, and biological eradication by 2055. In order to achieve that, changes to the TB testing and pest control approach will be phased in.



Visit tbfree.co.nz/dcamap to check which disease control area you're in.

New areas will be available on 1 March.





Logan Evans

TESTING EASES FOR FARMERS AROUND HOKONUI HILLS

Southland farmer Logan Evans has seen the nearby Hokonui Hills change from a bovine tuberculosis hotspot to an example of how good possum control can help eradicate TB.

Logan has managed Mount Peel on the Otapiri-Mandeville Road, near Gore in Southland, for about 15 years. The 2800 hectare farm is rolling hills and valleys, runs 720 Angus-Hereford-cross cows,

670 steer and heifer calves are wintered plus 120 rising-two-year-old fattening cattle.

The family operation, which includes Logan's wife Nicole and his parents Rex and Hilary Evans, has another block eight kilometers away.

The large number of cattle suits the hill country property and they comprise about 40 per cent of the total stock units farmed while sheep make up 60 per cent. "We are reasonably high on the beef side of things, which is a good thing with beef prices as they are at the moment," says Logan.

The property is close to the Hokonui Hills, the historical TB hotspot that has become a TB eradication proof-of-concept area. The area is free from TB-carrying possums, and from 1 March a surrounding area of 53,700 hectares will have its TB testing regime relax from annual to biennial testing for all animals over 24 months of age. That means a reduction of almost 15,000 TB tests affecting 141 cattle and deer herds.

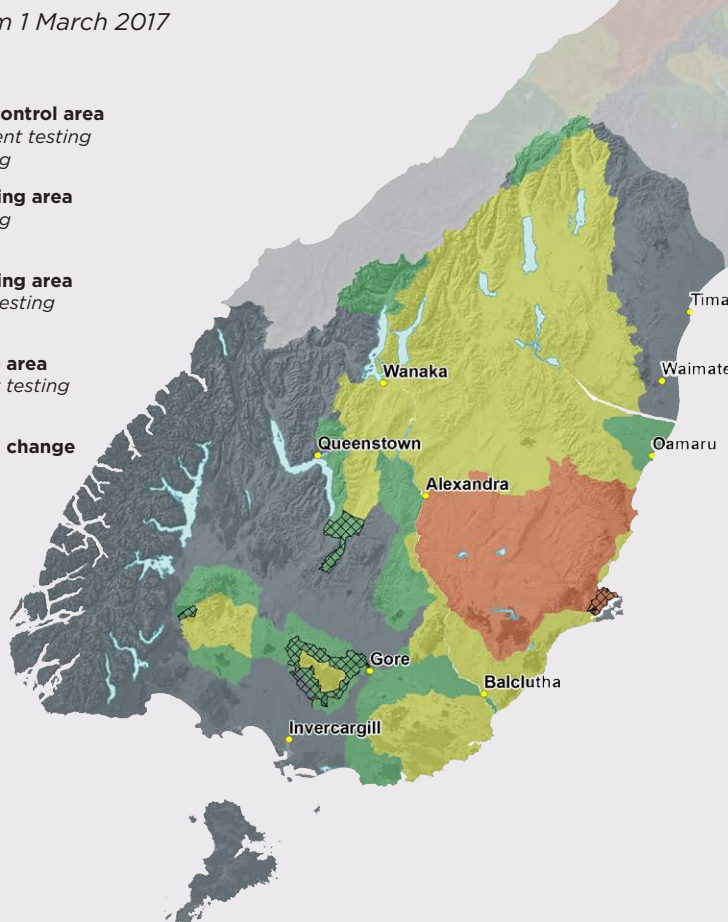
Logan, 35, farms the property with one farm employee and support from his wife and two kids, Trelise, 4, and Max, 2. "Between chasing them and chasing sheep and cattle, that about consumes our lives at the moment."

"My biggest worry about testing every two years is that I might forget about it! But OSPRI lets me know when we need to test. It's good to hear that we don't need to test so much. That means we can push that money into possum control in hotspots that really need it."

DISEASE CONTROL AREA CHANGES IN THE SOUTHERN SOUTH ISLAND

Areas valid from 1 March 2017

-  **Movement control area**
Pre-movement testing
Yearly testing
-  **Special testing area**
Yearly testing
-  **Special testing area**
Two-yearly testing
-  **Surveillance area**
Three-yearly testing
-  **Testing area change**



170
HERDS WITH
LESS TESTING

18,000
LESS
TB TESTS

94,000
HECTARES
AFFECTED



FURTHER INFORMATION

For more information visit
tbfree.co.nz.

If you have questions or
need a hand call OSPRI on

0800 482 463

OSPRI manages the NAIT
and TBfree programmes
and can help you meet your
responsibilities for each.