

# GOOD NEWS! WE'RE REDUCING TB TESTING REQUIREMENTS FOR NEARLY 10,000 HERDS

Farmers can enjoy the benefit of less TB testing as OSPRI's TBfree programme reduces the disease control areas.

The farming industry's investment in TB eradication is paying off again as this year's disease control area changes affect 5.3 million hectares, nearly 10,000 herds and result in 500,000 less TB tests. The reductions are effective from 1 March.

If you're in a region where movement control areas have been revoked you'll benefit from the freedom to move stock without any pre-movement tests, or from significantly less TB tests as special testing area requirements are relaxed.

OSPRI's TBfree programme divides the country into a number of disease control areas. Each has different TB testing requirements and control measures depending on the risk of TB being transferred from infected wildlife (mainly possums) to cattle and deer. Intense TB testing, movement control and both ground and aerial pest control are used to stop the spread of TB. As our work proves successful in each area, disease control areas are reviewed and testing requirements relaxed.

Extensive coordinated possum control over many years in South Canterbury, Otago and Southland has seen a dramatic drop in the number of infected herds in the southern South Island with only 6 infected herds at the end of 2015 – down from 40 in 2006.

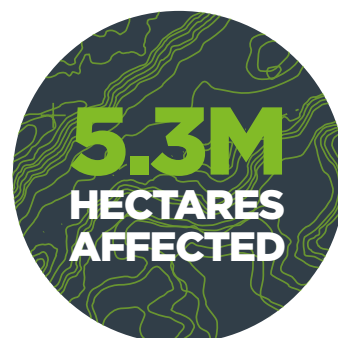
Nationally over the past four years, OSPRI's TBfree programme had eradicated TB from 1.2 million hectares at the end of 2015 and infected herds were down to 34 – a huge decrease from nearly 1700 in 1994.

The plan for how OSPRI manages TB is changing from 1 July 2016. The plan was independently reviewed in 2015 and a proposal is currently with the Minister for Primary Industries for approval. The proposal has a goal of full eradication of TB from New Zealand by 2055. In order to achieve that, changes to TB testing and pest control will be phased in.



Visit [tbfree.co.nz/dcamap](http://tbfree.co.nz/dcamap) to check which disease control area you're in.

*New areas will be available on 1 March.*





Clint Robinson. Photo: The Ensign

# FEWER TESTS A RELIEF FOR CATLINS STOCKMAN

TB testing in muddy winter stockyards will become a thing of the past for Catlins beef farmer Clint Robinson when movement control restrictions in his area are lifted in March.

Clint farms cattle in Clinton on the Catlins border, about 30 minutes south of Balclutha. His property at the top of the Owaka Valley is 2000 hectares of tussock hill country up to

500 metres above sea level, and sees snow each winter.

"We run 420 breeding cows and 200 yearlings," says Clint. "Traditionally we send our steers off at weaning time to the beef lot, but this year we're going to keep them back and put them on fodder beets."

"We're in a movement control area; we have been for a long time. I'm from Tapanui, just down the road, and as far as I remember we've always been in a movement control zone.

"At the height of the TB infection, the Catlins had over 100 infected herds, but with the pest control and monitoring, the teams have come in and really cleaned it up."

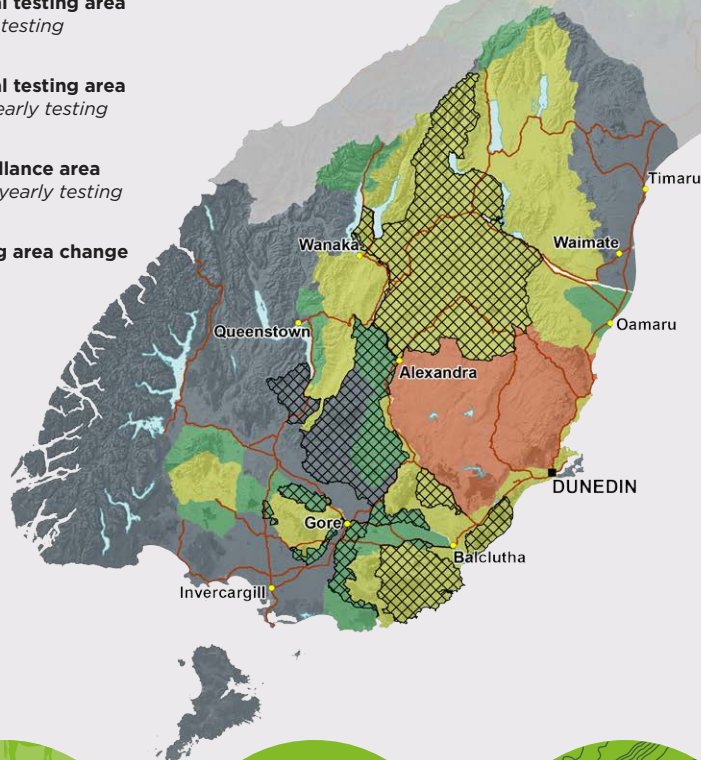
From 1 March this year, the Catlins movement control area will be revoked, and stock will no longer need to be tested before each movement. This affects more than 150,000 hectares of land, 216 cattle herds and 16 deer herds. It means a reduction of 30,500 TB tests each year.

Clint says lifting the movement control area will make a bit of a difference to his work. "It'll be great not to have to test in the middle of winter, because you make a huge mess bringing the stock in."

## DISEASE CONTROL AREA CHANGES IN THE SOUTHERN SOUTH ISLAND

Areas valid from 1 March 2016

-  **Movement control area**  
Pre-movement testing  
Yearly testing
-  **Special testing area**  
Yearly testing
-  **Special testing area**  
Two-yearly testing
-  **Surveillance area**  
Three-yearly testing
-  **Testing area change**



**1,700**  
HERDS WITH  
LESS TESTING

**160,000**  
LESS  
TB TESTS

**1.7M**  
HECTARES  
AFFECTED



### FURTHER INFORMATION

For more information visit [tbfree.co.nz](http://tbfree.co.nz).

If you have questions or need a hand call OSPRI on

**0800 482 463**

OSPRI manages the NAIT and TBfree programmes and can help you meet your responsibilities for each.